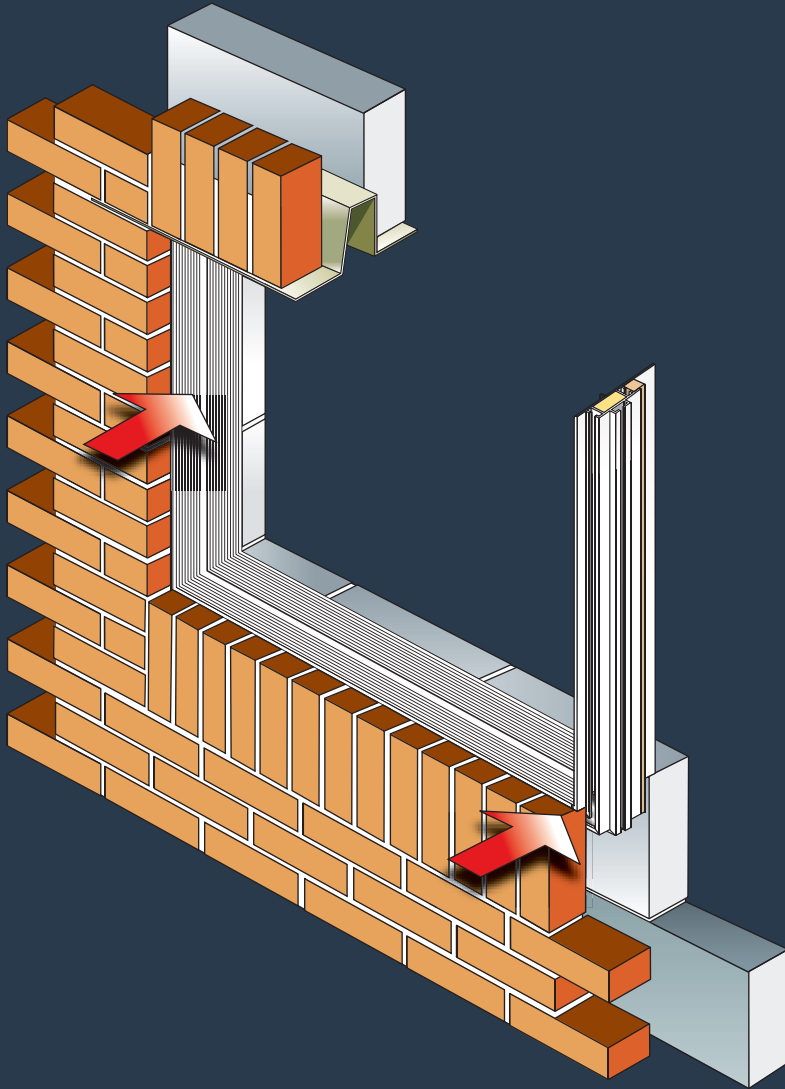


INSULATED FRAME FORMERS FOR **WIDER CAVITIES**

**DACATIE**  
BUILDINGSOLUTIONS



**Dacatie Insulated Frame Formers:**

- Cavity widths from 75mm - 160mm
- BBA Approved
- Accurate Window Template - Saves Time



THE SPECIFIERS CHOICE TO ACHIEVE BUILDING REGULATIONS COMPLIANCE

Frame Formers

## Features

Complies with new Part L Building Regulations

Reduces risk of condensation, mould and moisture migration across the cavity

BBA Certified to all weather ratings including severe and very severe categories (BS 5628) (with 30mm set back)

Built-in plaster stop (optional)

BBA Certified

## Specifications

### Profile

White non water-absorbing PVCu

### Insulation

XPS insulation, HCFC & CFC-free

### Sizes

To Client Specification

### Cavity widths

75mm - 160mm

Standard widths: 75, 85, 90, 100, 110, 125, 140 and 160mm  
Other cavity widths available on request

### Minimal thermal resistance path

0.45m<sup>2</sup>/KW

### Specification Statement

Use Dacatie FF4000/ FF5000 Frame Formers as brickwork template and insulated closers for window and door cavities. Installation should be completed in accordance with the manufacturers instructions.

## Regulations

Approved Document Part L revised 2002

Complies with Robust Detail and BR262 providing severe weather rating

Manufactured to ISO9001

## Order codes

Dacatie FF Frame Former (cavity width mm) frame offset  
Specify with or without plaster stop.  
**Check reveal:** Available  
**Fixing Ties:** UTF

# FRAME FORMERS

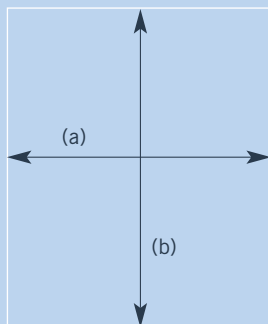
## FF4000/FF5000

**DACATIE**  
BUILDINGSOLUTIONS

### HOW TO ORDER

For Dacatie Frame Former, the following information should be supplied:

1. Overall width (a)	mm
2. Overall height (b)	mm
3. Cavity width	mm
4. Three or four sided former	3/4
5. Plaster stop required?	yes/no
6. If plaster stop 'yes' - offset position	mm
7. Check reveal	yes/no
8. Are snappers required?	yes/no



(a)=brick to brick width  
(b)=brick to lintel height

It is the responsibility of the contractor to ensure frames are supplied as ordered before installation, as no responsibility for any incorrect dimensions can be considered after the frame former has been built into the brickwork.

**Note:** when ordering for timber frame constructions, please contact our technical department

### APPLICATION/FIXING DETAILS

The Dacatie frame Former is suitable for use with all window and door frames, including timber, PVCU and aluminium. For easy installation follow these steps.

#### Step 1

Build wall up to sill height and locate the Dacatie Frame Former in the cavity (check former is square and propped up vertically).

#### Step 2

Build up courses of brickwork inserting brick ties every 225mm (every three bricks or every course of block work).

#### Step 3

Brick up to lintel height and remove bracing (if applicable).

#### Step 4

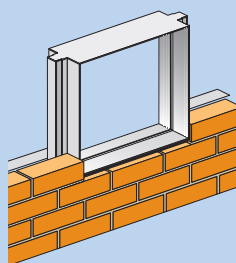
Build in lintel and upper brickwork.

#### Notes for window and door installation

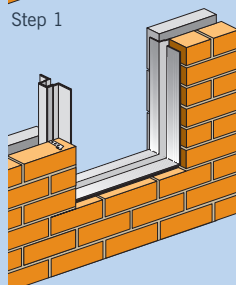
Check window or door is within tolerances; windows should be 10mm less than inside width of former and 8mm less than the inside height of former. Fix with standard window fixings (e.g. lugs, reveal straps or bolt fixings). Alternatively if the window is being fitted with the push/clip fit snapper system, the snappers should be located 150mm from each corner and then at no more than 600mm centres.

For frames over 2.1m in height and width, mechanical fixings should also be used. The use of the snapper system is entirely at the discretion of the installer.

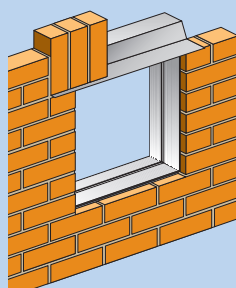
For complete and secure fixing, use bolts or screws.



Step 1



Steps 2-3



Step 4

QUANTUM PROFILE SYSTEMS LTD.  
SALMON FIELDS ROYTON OLDHAM  
LANCASHIRE OL2 6JG

SALES & TECHNICAL SUPPORT

**0161 622 2020**

f: 0161 622 2022 e: sales@dacatie.co.uk

DACATIE is a registered trade mark of Quantum Profile Systems Limited.

[www.dacatie.co.uk](http://www.dacatie.co.uk)